

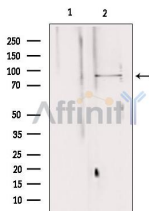
## AGGF1 Ab

Cat.#: DF12109  
Size: 100ul,200ul

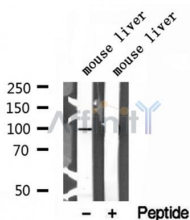
Concn.: 1mg/ml  
Source: Rabbit

Mol.Wt.: 84-100 kDa  
Clonality: Polyclonal

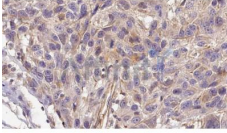
Application:	WB 1:500-1:2000, IHC 1:50-1:200
Reactivity:	Human,Mouse,Rat
Purification:	The antiserum was purified by peptide affinity chromatography using SulfoLink™ Coupling Resin (Thermo Fisher Scientific).
Specificity:	AGGF1 Ab detects endogenous levels of AGGF1.
Immunogen:	A synthesized peptide derived from human AGGF1.
Uniprot:	Q8N302
Subcellular Location:	Cytoplasm. Secreted. Cytoplasmic in microvascular endothelial cells. Upon angiogenesis, when endothelial cell tube formation is initiated, it is secreted.
Tissue Specificity:	Widely expressed. Expressed in endothelial cells, vascular smooth muscle cells and osteoblasts. Expressed in umbilical vein endothelial cells and microvascular endothelial cells.
Storage Condition and Buffer:	Rabbit IgG in phosphate buffered saline , pH 7.4, 150mM NaCl, 0.02% sodium azide and 50% glycerol.Store at -20 °C.Stable for 12 months from date of receipt.



Western blot analysis of extracts from 293, using AGGF1 Ab. Lane 1 was treated with the blocking peptide.



Western blot analysis of extracts of mouse liver tissue, using AGGF1 Ab.



DF12109 at 1/100 staining Human Melanoma tissue by IHC-P. The sample was formaldehyde fixed and a heat mediated antigen retrieval step in citrate buffer was performed. The sample was then blocked and incubated with the Ab for 1.5 hours at 22°C. An HRP conjugated goat anti-rabbit Ab was used as the secondary.

**IMPORTANT:** For western blot, incubate membrane with diluted primary Ab in 5% w/v milk , 1X TBS, 0.1% Tween@20 at 4°C with gentle shaking, overnight.

For Research Use Only. Not for use in diagnostic and therapeutic procedures. Not for resale without express authorization.