

## NSDHL Antibody

Cat.#: DF12432  
Size: 100ul,200ul

Concn.: 1mg/ml  
Source: Rabbit

Mol.Wt.: 42 kDa,40 kDa  
Clonality: Polyclonal

**Application:** WB 1:500-1:2000, IHC 1:50-1:200, ELISA(peptide)  
1:20000-1:40000

**Reactivity:** Human,Mouse,Rat

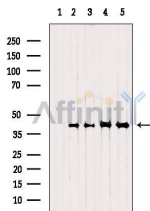
**Purification:** The antiserum was purified by peptide affinity chromatography using SulfoLink™ Coupling Resin (Thermo Fisher Scientific).

**Specificity:** NSDHL Antibody detects endogenous levels of total NSDHL.

**Immunogen:** A synthesized peptide derived from human NSDHL, corresponding to a region within the internal amino acids.

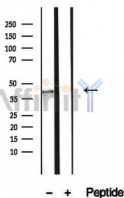
**Uniprot:** Q15738

**Storage Condition and Buffer:** Rabbit IgG in phosphate buffered saline , pH 7.4, 150mM NaCl, 0.02% sodium azide and 50% glycerol.Store at -20 °C.Stable for 12 months from date of receipt.

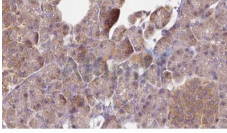


Western blot analysis of extracts from various samples, using NSDHL Antibody.

Lane 1: Mouse lung treated with blocking peptide;  
Lane 2: Mouse lung;  
Lane 3: Mouse brain;  
Lane 4: 293;  
Lane 5: Hybridoma cells.



Western blot analysis of extracts from HeLa cells, using NSDHL antibody.



DF12432 at 1/100 staining Human pancreas cancer tissue by IHC-P. The sample was formaldehyde fixed and a heat mediated antigen retrieval step in citrate buffer was performed. The sample was then blocked and incubated with the antibody for 1.5 hours at 22°C. An HRP conjugated goat anti-rabbit antibody was used as the secondary antibody.

**IMPORTANT:** For western blot, incubate membrane with diluted primary Ab in 5% w/v milk , 1X TBS, 0.1% Tween@20 at 4°C with gentle shaking, overnight.

For Research Use Only. Not for use in diagnostic and therapeutic procedures. Not for resale without express authorization.