

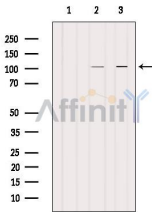
PDE6A Ab

Cat.#: DF12446
 Size: 100ul,200ul

Concn.: 1mg/ml
 Source: Rabbit

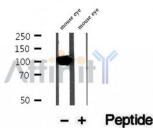
Mol.Wt.: 100-110 kDa
 Clonality: Polyclonal

- Application:** WB 1:500-1:2000, IHC 1:50-1:200
- Reactivity:** Human,Mouse,Rat
- Purification:** The antiserum was purified by peptide affinity chromatography using SulfoLink™ Coupling Resin (Thermo Fisher Scientific).
- Specificity:** PDE6A Ab detects endogenous levels of PDE6A.
- Immunogen:** A synthesized peptide derived from human PDE6A.
- Uniprot:** P16499
- Subcellular Location:** Cell membrane.
- Similarity:** Belongs to the cyclic nucleotide phosphodiesterase family.
- Storage Condition and Buffer:** Rabbit IgG in phosphate buffered saline , pH 7.4, 150mM NaCl, 0.02% sodium azide and 50% glycerol.Store at -20 °C.Stable for 12 months from date of receipt.

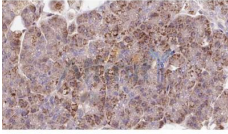


Western blot analysis of extracts from various samples, using PDE6A Ab.

- Lane 1: Pc12 treated with blocking peptide;
- Lane 2: Pc12;
- Lane 3: Mouse brain.



Western blot analysis of extracts of mouse eye tissue, using PDE6A Ab.



DF12446 at 1/100 staining Human pancreas cancer tissue by IHC-P. The sample was formaldehyde fixed and a heat mediated antigen retrieval step in citrate buffer was performed. The sample was then blocked and incubated with the Ab for 1.5 hours at 22°C. An HRP conjugated goat anti-rabbit Ab was used as the secondary.

IMPORTANT: For western blot, incubate membrane with diluted primary Ab in 5% w/v milk , 1X TBS, 0.1% Tween@20 at 4°C with gentle shaking, overnight.

For Research Use Only. Not for use in diagnostic and therapeutic procedures. Not for resale without express authorization.