

# CHMP2B Antibody

Cat.#: DF12582	Concn.: 1mg/ml	Mol.Wt.: 32 kDa
Size: 100ul,200ul	Source: Rabbit	Clonality: Polyclonal

**Application:** WB 1:500-1:2000, ELISA(peptide) 1:20000-1:40000

**Reactivity:** Human,Mouse,Rat

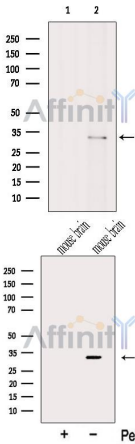
**Purification:** The antiserum was purified by peptide affinity chromatography using SulfoLink™ Coupling Resin (Thermo Fisher Scientific).

**Specificity:** CHMP2B Antibody detects endogenous levels of total CHMP2B.

**Immunogen:** A synthesized peptide derived from human CHMP2B, corresponding to a region within C-terminal amino acids.

**Uniprot:** Q9UQN3

**Storage Condition and Buffer:** Rabbit IgG in phosphate buffered saline , pH 7.4, 150mM NaCl, 0.02% sodium azide and 50% glycerol.Store at -20 °C.Stable for 12 months from date of receipt.



Western blot analysis of extracts from Colo205, using CHMP2B Antibody. The lane on the left was treated with blocking peptide.

Western blot analysis of extracts from Mouse brain tissue , using CHMP2B Antibody. The lane on the left was treated with blocking peptide.

**IMPORTANT:** For western blot, incubate membrane with diluted primary Ab in 5% w/v milk , 1X TBS, 0.1% Tween@20 at 4°C with gentle shaking, overnight.

For Research Use Only. Not for use in diagnostic and therapeutic procedures. Not for resale without express authorization.