

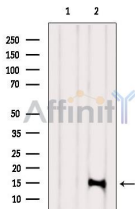
ARMET Ab

Cat.#: DF12836
Size: 100ul,200ul

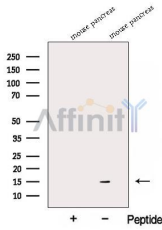
Concn.: 1mg/ml
Source: Rabbit

Mol.Wt.: 15 kDa
Clonality: Polyclonal

Application:	WB 1:500-1:2000
Reactivity:	Human,Mouse,Rat
Purification:	The antiserum was purified by peptide affinity chromatography using SulfoLink™ Coupling Resin (Thermo Fisher Scientific).
Specificity:	ARMET Ab detects endogenous levels of ARMET.
Immunogen:	A synthesized peptide derived from human ARMET, corresponding to a region within the internal amino acids.
Uniprot:	P55145
Subcellular Location:	Endoplasmic reticulum;Extracellular region or secreted;
Tissue Specificity:	By endoplasmic reticulum stress (PubMed:18561914, PubMed:22637475, PubMed:29497057). By hypoxia (PubMed:29497057).
Similarity:	The N-terminal region may be responsible for neurotrophic activity while the C-terminal region may play a role in the ER stress response.The N-terminal region may be required for lipid sulfatide binding.Belongs to the ARMET family.
Storage Condition and Buffer:	Rabbit IgG in phosphate buffered saline , pH 7.4, 150mM NaCl, 0.02% sodium azide and 50% glycerol.Store at -20 °C.Stable for 12 months from date of receipt.



Western blot analysis of extracts from HepG2, using ARMET Ab. The lane on the left was treated with blocking peptide.



Western blot analysis of extracts from Mouse pancreas tissue, using ARMET Ab. The lane on the left was treated with blocking peptide.

IMPORTANT: For western blot, incubate membrane with diluted primary Ab in 5% w/v milk , 1X TBS, 0.1% Tween@20 at 4°C with gentle shaking, overnight.

For Research Use Only. Not for use in diagnostic and therapeutic procedures. Not for resale without express authorization.