

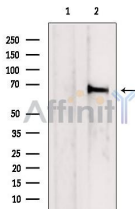
CBFA2T2 Ab

Cat.#: DF12881
Size: 100ul,200ul

Concn.: 1mg/ml
Source: Rabbit

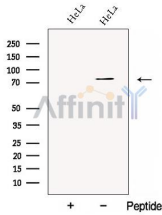
Mol.Wt.: 80 kDa, 65 kDa
Clonality: Polyclonal

Application:	WB 1:500-1:2000
Reactivity:	Human,Mouse,Rat
Purification:	The antiserum was purified by peptide affinity chromatography using SulfoLink™ Coupling Resin (Thermo Fisher Scientific).
Specificity:	CBFA2T2 Ab detects endogenous levels of CBFA2T2.
Immunogen:	A synthesized peptide derived from human CBFA2T2, corresponding to a region within the internal amino acids.
Uniprot:	O43439
Subcellular Location:	Nucleus;
Tissue Specificity:	Ubiquitously expressed in fetal and adult tissues. Highly expressed in adult brain, heart, lung, kidney, lymph node, appendix, thymus, testis, uterus, small intestine, prostate and thymus.
Similarity:	Nervy homology region 2 (NHR2) mediates homo- and possibly heterotypic oligomerization by forming a four-helix bundle tetrameric structure.Belongs to the CBFA2T family.
Storage Condition and Buffer:	Rabbit IgG in phosphate buffered saline , pH 7.4, 150mM NaCl, 0.02% sodium azide and 50% glycerol.Store at -20 °C.Stable for 12 months from date of receipt.



Western blot analysis of extracts from PC12, using CBFA2T2 Ab. The lane on the left was treated with blocking peptide.

Observed bands: 65 kDa.



Western blot analysis of extracts from HeLa cells, using CBFA2T2 Ab. The lane on the left was treated with blocking peptide.

IMPORTANT: For western blot, incubate membrane with diluted primary Ab in 5% w/v milk , 1X TBS, 0.1% Tween@20 at 4°C with gentle shaking, overnight.

For Research Use Only. Not for use in diagnostic and therapeutic procedures. Not for resale without express authorization.