

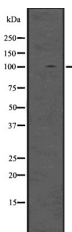
DGCR8 Ab

Cat.#: DF2917
Size: 100ul,200ul

Concn.: 1mg/ml
Source: Rabbit

Mol.Wt.: 100kDa
Clonality: Polyclonal

Application:	WB 1:1000-3000 ICC/IF
Reactivity:	Human,Mouse,Rat
Purification:	The antiserum was purified by peptide affinity chromatography using SulfoLink™ Coupling Resin (Thermo Fisher Scientific).
Specificity:	DGCR8 Ab detects endogenous levels of total DGCR8.
Immunogen:	A synthesized peptide derived from human DGCR8.
Uniprot:	Q8WYQ5
Subcellular Location:	Nucleus. Nucleus > nucleolus. Colocalizes with nucleolin and DROSHA in the nucleolus. Mostly detected in the nucleolus as electron-dense granular patches around the fibrillar center (FC) and granular component (GC). Also detected in the nucleoplasm as small foci adjacent to splicing speckles near the chromatin structure. Localized with DROSHA in GW bodies (GWBs), also known as P-bodies.
Tissue Specificity:	Ubiquitously expressed.
Similarity:	Both DRBM domains are required for efficient binding to pri-miRNA. The region between residues 276 and 498 has an autoinhibitory function on pri-miRNA processing activity.
Storage Condition and Buffer:	Rabbit IgG in phosphate buffered saline , pH 7.4, 150mM NaCl, 0.02% sodium azide and 50% glycerol.Store at -20 °C.Stable for 12 months from date of receipt.



Western blot analysis of DGCR8 using HeLa whole cell lysates



DF2917 staining Hela by IF/ICC. The sample were fixed with PFA and permeabilized in 0.1% Triton X-100, then blocked in 10% serum for 45 minutes at 25°C. The primary Ab was diluted at 1/200 and incubated with the sample for 1 hour at 37°C. An Alexa Fluor 594 conjugated goat anti-rabbit IgG (H+L) Ab, diluted at 1/600, was used as the secondary Ab.

IMPORTANT: For western blot, incubate membrane with diluted primary Ab in 5% w/v milk , 1X TBS, 0.1% Tween@20 at 4°C with gentle shaking, overnight.

For Research Use Only. Not for use in diagnostic and therapeutic procedures. Not for resale without express authorization.