

## TDP43 Antibody

Cat.#: DF2968  
Size: 100ul,200ul

Concn.: 1mg/ml  
Source: Rabbit

Mol.Wt.: 43 KD  
Clonality: Polyclonal

**Application:** WB 1:1000-3000, ELISA(peptide) 1:20000-1:40000

**Reactivity:** Human,Mouse,Rat

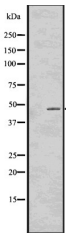
**Purification:** The antiserum was purified by peptide affinity chromatography using SulfoLink™ Coupling Resin (Thermo Fisher Scientific).

**Specificity:** TDP43 Antibody detects endogenous levels of total TDP43.

**Immunogen:** A synthesized peptide derived from human TDP43, corresponding to a region within C-terminal amino acids.

**Uniprot:** Q13148

**Storage Condition and Buffer:** Rabbit IgG in phosphate buffered saline , pH 7.4, 150mM NaCl, 0.02% sodium azide and 50% glycerol.Store at -20 °C.Stable for 12 months from date of receipt.



Western blot analysis of TDP43 using HT-29 whole cell lysates

**IMPORTANT:** For western blot, incubate membrane with diluted primary Ab in 5% w/v milk , 1X TBS, 0.1% Tween@20 at 4°C with gentle shaking, overnight.

For Research Use Only. Not for use in diagnostic and therapeutic procedures. Not for resale without express authorization.