

14-3-3 theta Antibody

Cat.#: DF3494
 Size: 100ul,200ul

Concn.: 1mg/ml
 Source: Rabbit

Mol.Wt.: 28 KD
 Clonality: Polyclonal

Application: WB 1:500-1:1000, IF/ICC 1:100-1:500, ELISA(peptide) 1:20000-1:40000
 *The optimal dilutions should be determined by the end user.

Reactivity: Human,Mouse,Rat

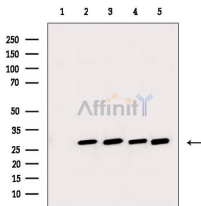
Purification: The antiserum was purified by peptide affinity chromatography using SulfoLink™ Coupling Resin (Thermo Fisher Scientific).

Specificity: 14-3-3 theta Antibody detects endogenous levels of total 14-3-3 theta.

Immunogen: A synthesized peptide derived from human 14-3-3 theta, corresponding to a region within the internal amino acids.

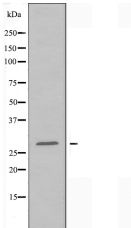
Uniprot: P27348

Storage Condition and Buffer: Rabbit IgG in phosphate buffered saline , pH 7.4, 150mM NaCl, 0.02% sodium azide and 50% glycerol.Store at -20 °C.Stable for 12 months from date of receipt.



Western blot analysis of extracts from various samples, using 14-3-3 theta Antibody.

Lane 1: Raji cells, blocked with antigen-specific peptides,
 Lane 2: Raji cells,
 Lane 3: COLO205 cells,
 Lane 4: Rat spleen,
 Lane 5: HepG2 cells.



Western blot analysis of extracts from HUVEC cells using 14-3-3 theta antibody.



DF3494 staining HeLa cells by IF/ICC. The sample were fixed with PFA and permeabilized in 0.1% Triton X-100,then blocked in 10% serum for 45 minutes at 25°C. The primary antibody was diluted at 1/200 and incubated with the sample for 1 hour at 37°C. An Alexa Fluor 594 conjugated goat anti-rabbit IgG (H+L) antibody(Red), diluted at 1/600, was used as secondary antibody.

IMPORTANT: For western blot, incubate membrane with diluted primary Ab in 5% w/v milk , 1X TBS, 0.1% Tween@20 at 4°C with gentle shaking, overnight.

For Research Use Only. Not for use in diagnostic and therapeutic procedures. Not for resale without express authorization.