

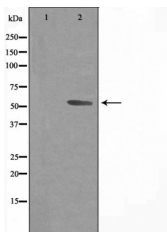
Cytochrome P450 3A43 Ab

Cat.#: DF3584
Size: 100ul,200ul

Concn.: 1mg/ml
Source: Rabbit

Mol.Wt.: 57 KD
Clonality: Polyclonal

Application:	WB 1:500~1:1000, IF/ICC 1:100-1:500
Reactivity:	Human
Purification:	The antiserum was purified by peptide affinity chromatography using SulfoLink™ Coupling Resin (Thermo Fisher Scientific).
Specificity:	Cytochrome P450 3A43 Ab detects endogenous levels of total Cytochrome P450 3A43.
Immunogen:	A synthesized peptide.
Uniprot:	Q9HB55
Subcellular Location:	Endoplasmic reticulum membrane; Peripheral membrane protein. Microsome membrane; Peripheral membrane protein.
Tissue Specificity:	Highest expression level in prostate. Also expressed in liver, kidney, pancreas, fetal liver and fetal skeletal muscle.
Similarity:	Belongs to the cytochrome P450 family.
Storage Condition and Buffer:	Rabbit IgG in phosphate buffered saline , pH 7.4, 150mM NaCl, 0.02% sodium azide and 50% glycerol.Store at -20 °C.Stable for 12 months from date of receipt.



Western blot analysis of extracts from Jurkat cells, using Cytochrome P450 3A43 Ab. The lane on the left was treated with the antigen-specific peptide.



DF3584 staining HeLa cells by IF/ICC. The sample were fixed with PFA and permeabilized in 0.1% Triton X-100, then blocked in 10% serum for 45 minutes at 25°C. The primary Ab was diluted at 1/200 and incubated with the sample for 1 hour at 37°C. An Alexa Fluor 594 conjugated goat anti-rabbit IgG (H+L) Ab (Red), diluted at 1/600, was used as secondary Ab.

IMPORTANT: For western blot, incubate membrane with diluted primary Ab in 5% w/v milk , 1X TBS, 0.1% Tween@20 at 4°C with gentle shaking, overnight.

For Research Use Only. Not for use in diagnostic and therapeutic procedures. Not for resale without express authorization.