

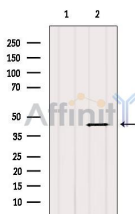
HSD17B2 Ab

Cat.#: DF6734
Size: 100ul,200ul

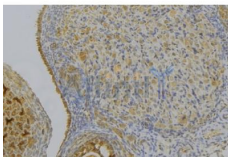
Concn.: 1mg/ml
Source: Rabbit

Mol.Wt.: 42kDa
Clonality: Polyclonal

Application:	WB 1:500-1:2000 IHC 1:50-1:200
Reactivity:	Human,Rat
Purification:	The antiserum was purified by peptide affinity chromatography using SulfoLink™ Coupling Resin (Thermo Fisher Scientific).
Specificity:	HSD17B2 Ab detects endogenous levels of total HSD17B2.
Immunogen:	A synthesized peptide derived from human HSD17B2.
Uniprot:	P37059
Subcellular Location:	Membrane.
Similarity:	Belongs to the short-chain dehydrogenases/reductases (SDR) family.
Storage Condition and Buffer:	Rabbit IgG in phosphate buffered saline , pH 7.4, 150mM NaCl, 0.02% sodium azide and 50% glycerol.Store at -20 °C.Stable for 12 months from date of receipt.



Western blot analysis of extracts from MCF7, using HSD17B2 Ab. The lane on the left was treated with blocking peptide.



DF6734 at 1/100 staining Human gastric tissue by IHC-P. The sample was formaldehyde fixed and a heat mediated antigen retrieval step in citrate buffer was performed. The sample was then blocked and incubated with the Ab for 1.5 hours at 22°C. An HRP conjugated goat anti-rabbit Ab was used as the secondary.

IMPORTANT: For western blot, incubate membrane with diluted primary Ab in 5% w/v milk , 1X TBS, 0.1% Tween@20 at 4°C with gentle shaking, overnight.



Affinity Biosciences

website: www.affbiotech.com

order: order@affbiotech.com

For Research Use Only. Not for use in diagnostic and therapeutic procedures. Not for resale without express authorization.