

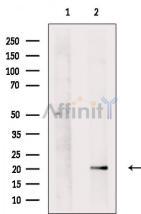
## AIF1/IBA1 Antibody

Cat.#: DF7552  
Size: 100ul,200ul

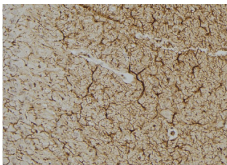
Concn.: 1mg/ml  
Source: Rabbit

Mol.Wt.: 17 kDa  
Clonality: Polyclonal

Application:	WB 1:1000-3000, IHC 1:200 *The optimal dilutions should be determined by the end user.
Reactivity:	Human,Rat
Purification:	The antiserum was purified by peptide affinity chromatography using SulfoLink™ Coupling Resin (Thermo Fisher Scientific).
Specificity:	AIF1/IBA1 Antibody detects endogenous levels of total AIF1/IBA1.
Immunogen:	A synthesized peptide derived from human AIF1/IBA1, corresponding to a region within C-terminal amino acids.
Uniprot:	P55008
Storage Condition and Buffer:	Rabbit IgG in phosphate buffered saline , pH 7.4, 150mM NaCl, 0.02% sodium azide and 50% glycerol.Store at -20 °C.Stable for 12 months from date of receipt.



Western blot analysis IBA1 using HeLa whole cell lysates.The lane on the left was treated with blocking peptide.



DF7552 at 1/100 staining rat brain tissue by IHC-P. The sample was formaldehyde fixed and a heat mediated antigen retrieval step in citrate buffer was performed. The sample was then blocked and incubated with the antibody for 1.5 hours at 22°C. An HRP conjugated goat anti-rabbit antibody was used as the secondary antibody.

**IMPORTANT:** For western blot, incubate membrane with diluted primary Ab in 5% w/v milk , 1X TBS, 0.1% Tween@20 at 4°C with gentle shaking, overnight.