

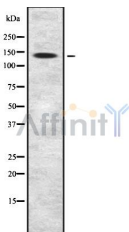
FLII Ab

Cat.#: DF8003
Size: 100ul,200ul

Concn.: 1mg/ml
Source: Rabbit

Mol.Wt.: 145 kDa
Clonality: Polyclonal

Application:	WB 1:1000-3000
Reactivity:	Human
Purification:	The antiserum was purified by peptide affinity chromatography using SulfoLink™ Coupling Resin (Thermo Fisher Scientific).
Specificity:	FLII Ab detects endogenous levels of total FLII.
Immunogen:	A synthesized peptide derived from human FLII.
Uniprot:	Q13045
Subcellular Location:	Nucleus. Cytoplasm > cytoskeleton. Cytoplasm > cytoskeleton > centrosome. Colocalizes to actin-rich structures in blastocysts and, together with HRAS1, RHOA and CDC42, in migrating fibroblasts. Localizes to centrosomes.
Tissue Specificity:	Strongest expression in skeletal muscle with high expression also in the heart and lung.
Storage Condition and Buffer:	Rabbit IgG in phosphate buffered saline , pH 7.4, 150mM NaCl, 0.02% sodium azide and 50% glycerol.Store at -20 °C.Stable for 12 months from date of receipt.



Western blot analysis FLII using HepG2 whole cell lysates

IMPORTANT: For western blot, incubate membrane with diluted primary Ab in 5% w/v milk , 1X TBS, 0.1% Tween@20 at 4°C with gentle shaking, overnight.

For Research Use Only. Not for use in diagnostic and therapeutic procedures. Not for resale without express authorization.