

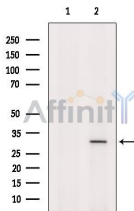
OLIG2 Antibody

Cat.#: DF8004
Size: 100ul,200ul

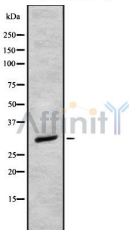
Concn.: 1mg/ml
Source: Rabbit

Mol.Wt.: 32 kDa
Clonality: Polyclonal

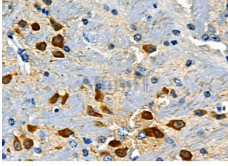
- Application:** WB 1:1000-3000, IHC 1:50-1:200, ELISA(peptide)
1:20000-1:40000
*The optimal dilutions should be determined by the end user.
- Reactivity:** Human,Monkey
- Purification:** The antiserum was purified by peptide affinity chromatography using SulfoLink™ Coupling Resin (Thermo Fisher Scientific).
- Specificity:** OLIG2 Antibody detects endogenous levels of total OLIG2.
- Immunogen:** A synthesized peptide derived from human OLIG2, corresponding to a region within the internal amino acids.
- Uniprot:** Q13516
- Storage Condition and Buffer:** Rabbit IgG in phosphate buffered saline , pH 7.4, 150mM NaCl, 0.02% sodium azide and 50% glycerol.Store at -20 °C.Stable for 12 months from date of receipt.



Western blot analysis of extracts from COS-7, using OLIG2 Antibody. The lane on the left was treated with blocking peptide.



Western blot analysis OLIG2 using K562 whole cell lysates



DF8004 at 1/100 staining Mouse brain tissue by IHC-P. The sample was formaldehyde fixed and a heat mediated antigen retrieval step in citrate buffer was performed. The sample was then blocked and incubated with the primary antibody at 4°C overnight. An HRP conjugated anti-Rabbit antibody was used as the secondary antibody.

IMPORTANT: For western blot, incubate membrane with diluted primary Ab in 5% w/v milk , 1X TBS, 0.1% Tween@20 at 4°C with gentle shaking, overnight.

For Research Use Only. Not for use in diagnostic and therapeutic procedures. Not for resale without express authorization.