

## USP10 Antibody

Cat.#: DF8061  
 Size: 100ul,200ul

Concn.: 1mg/ml  
 Source: Rabbit

Mol.Wt.: 87kDa,130kDa  
 Clonality: Polyclonal

**Application:** WB 1:1000-3000, IHC 1:50-1:200, ELISA(peptide)  
 1:20000-1:40000  
 \*The optimal dilutions should be determined by the end user.

**Reactivity:** Human,Mouse,Rat

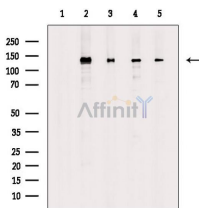
**Purification:** The antiserum was purified by peptide affinity chromatography using SulfoLink™ Coupling Resin (Thermo Fisher Scientific).

**Specificity:** USP10 Antibody detects endogenous levels of total USP10.

**Immunogen:** A synthesized peptide derived from human USP10, corresponding to a region within N-terminal amino acids.

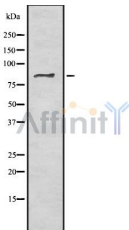
**Uniprot:** Q14694

**Storage Condition and Buffer:** Rabbit IgG in phosphate buffered saline , pH 7.4, 150mM NaCl, 0.02% sodium azide and 50% glycerol.Store at -20 °C.Stable for 12 months from date of receipt.

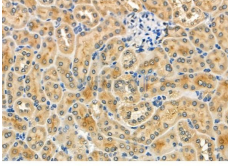


Western blot analysis of extracts from various samples, using USP10 Antibody.

Lane 1: HepG2 cells(serum starvation treatment), blocked with antigen-specific peptides,  
 Lane 2: HepG2 cells(serum starvation treatment),  
 Lane 3: PC12(H2O2 treatment),  
 Lane 4: RAW264.7 cells(heat shock treatment),  
 Lane 5: A549 cells(heat shock treatment).



Western blot analysis USP10 using HuvEc whole cell lysates



DF8061 at 1/100 staining Mouse kidney tissue by IHC-P. The sample was formaldehyde fixed and a heat mediated antigen retrieval step in citrate buffer was performed. The sample was then blocked and incubated with the primary antibody at 4°C overnight. An HRP conjugated anti-Rabbit antibody was used as the secondary antibody.

**IMPORTANT:** For western blot, incubate membrane with diluted primary Ab in 5% w/v milk , 1X TBS, 0.1% Tween@20 at 4°C with gentle shaking, overnight.

For Research Use Only. Not for use in diagnostic and therapeutic procedures. Not for resale without express authorization.