

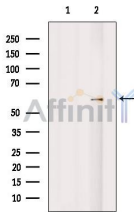
Cytochrome P450 46A1 Antibody

Cat.#: DF8926
Size: 100ul,200ul

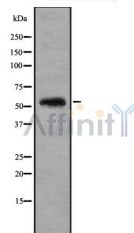
Concn.: 1mg/ml
Source: Rabbit

Mol.Wt.: 57 kDa
Clonality: Polyclonal

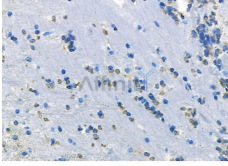
Application:	WB 1:1000-3000, IHC 1:50-1:200, ELISA(peptide) 1:20000-1:40000
Reactivity:	Human,Mouse,Monkey
Purification:	The antiserum was purified by peptide affinity chromatography using SulfoLink™ Coupling Resin (Thermo Fisher Scientific).
Specificity:	Cytochrome P450 46A1 Antibody detects endogenous levels of total Cytochrome P450 46A1.
Immunogen:	A synthesized peptide derived from human Cytochrome P450 46A1, corresponding to a region within the internal amino acids.
Uniprot:	Q9Y6A2
Storage Condition and Buffer:	Rabbit IgG in phosphate buffered saline , pH 7.4, 150mM NaCl, 0.02% sodium azide and 50% glycerol.Store at -20 °C.Stable for 12 months from date of receipt.



Western blot analysis of extracts from VERO cells, using Cytochrome P450 46A1 Antibody. The lane on the left was treated with blocking peptide.



Western blot analysis of Cytochrome P450 46A1 using HuvEc whole cell lysates



DF8926 at 1/100 staining Mouse brain tissue by IHC-P. The sample was formaldehyde fixed and a heat mediated antigen retrieval step in citrate buffer was performed. The sample was then blocked and incubated with the primary antibody at 4°C overnight. An HRP conjugated anti-Rabbit antibody was used as the secondary antibody.

IMPORTANT: For western blot, incubate membrane with diluted primary Ab in 5% w/v milk , 1X TBS, 0.1% Tween@20 at 4°C with gentle shaking, overnight.

For Research Use Only. Not for use in diagnostic and therapeutic procedures. Not for resale without express authorization.