

AKR1C4 Ab

Cat.#: DF9190
Size: 100ul,200ul

Concn.: 1mg/ml
Source: Rabbit

Mol.Wt.: 37 kDa
Clonality: Polyclonal

Application: WB 1:1000-3000, IHC 1:200

Reactivity: Human,Rat

Purification: The antiserum was purified by peptide affinity chromatography using SulfoLink™ Coupling Resin (Thermo Fisher Scientific).

Specificity: AKR1C4 Ab detects endogenous levels of total AKR1C4.

Immunogen: A synthesized peptide derived from human AKR1C4, corresponding to a region within N-terminal amino acids.

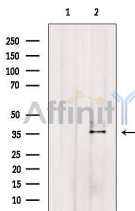
Uniprot: P17516

Subcellular Location: Cytoplasm.

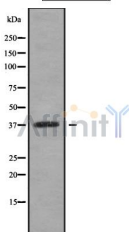
Tissue Specificity: Liver specific.

Similarity: Belongs to the aldo/keto reductase family.

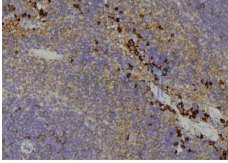
Storage Condition and Buffer: Rabbit IgG in phosphate buffered saline , pH 7.4, 150mM NaCl, 0.02% sodium azide and 50% glycerol.Store at -20 °C.Stable for 12 months from date of receipt.



Western blot analysis of extracts from HepG2 cells, using AKR1C4 Ab. The lane on the left was treated with blocking peptide.



Western blot analysis of AKR1C4 using K562 whole cell lysates



DF9190 at 1/100 staining Human lymph node tissue by IHC-P. The sample was formaldehyde fixed and a heat mediated antigen retrieval step in citrate buffer was performed. The sample was then blocked and incubated with the Ab for 1.5 hours at 22°C. An HRP conjugated goat anti-rabbit Ab was used as the secondary.

IMPORTANT: For western blot, incubate membrane with diluted primary Ab in 5% w/v milk , 1X TBS, 0.1% Tween@20 at 4°C with gentle shaking, overnight.

For Research Use Only. Not for use in diagnostic and therapeutic procedures. Not for resale without express authorization.