

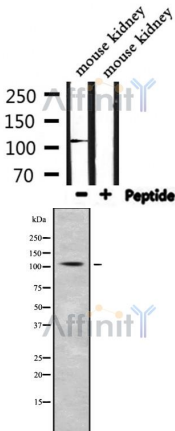
IGHMBP2 Ab

Cat.#: DF9454
 Size: 100ul,200ul

Concn.: 1mg/ml
 Source: Rabbit

Mol.Wt.: 109kDa
 Clonality: Polyclonal

- Application:** WB 1:1000-3000
- Reactivity:** Human,Mouse,Rat
- Purification:** The antiserum was purified by peptide affinity chromatography using SulfoLink™ Coupling Resin (Thermo Fisher Scientific).
- Specificity:** IGHMBP2 Ab detects endogenous levels of total IGHMBP2.
- Immunogen:** A synthesized peptide derived from human IGHMBP2.
- Uniprot:** P38935
- Subcellular Location:** Nucleus. Cytoplasm. Cell projection > axon. Colocalizes with the traslation initiation factor EIF4G2.
- Tissue Specificity:** Expressed in all tissues examined. Expressed in the developing and adult human brain, with highest expression in the cerebellum. Moderately expressed in fibroblasts.
- Similarity:** Belongs to the DNA2/NAM7 helicase family.
- Storage Condition and Buffer:** Rabbit IgG in phosphate buffered saline , pH 7.4, 150mM NaCl, 0.02% sodium azide and 50% glycerol.Store at -20 °C.Stable for 12 months from date of receipt.



Western blot analysis of extracts from mouse kidney, using IGHMBP2 Ab.

Western blot analysis IGHMBP2 using Jurkat whole cell lysates

IMPORTANT: For western blot, incubate membrane with diluted primary Ab in 5% w/v milk , 1X TBS, 0.1% Tween@20 at 4°C with gentle shaking, overnight.

For Research Use Only. Not for use in diagnostic and therapeutic procedures. Not for resale without express authorization.