

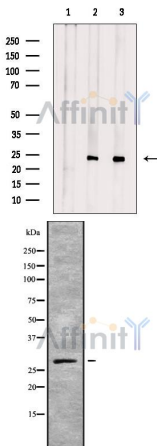
GCH1 Antibody

Cat.#: DF9546
Size: 100ul,200ul

Concn.: 1mg/ml
Source: Rabbit

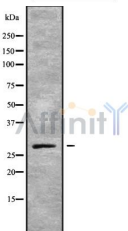
Mol.Wt.: 28 kDa, 23 kDa
Clonality: Polyclonal

Application:	WB 1:1000-3000, ELISA(peptide) 1:20000-1:40000 *The optimal dilutions should be determined by the end user.
Reactivity:	Human,Mouse,Rat
Purification:	The antiserum was purified by peptide affinity chromatography using SulfoLink™ Coupling Resin (Thermo Fisher Scientific).
Specificity:	GCH1 Antibody detects endogenous levels of total GCH1.
Immunogen:	A synthesized peptide derived from human GCH1, corresponding to a region within the internal amino acids.
Uniprot:	P30793
Storage Condition and Buffer:	Rabbit IgG in phosphate buffered saline , pH 7.4, 150mM NaCl, 0.02% sodium azide and 50% glycerol.Store at -20 °C.Stable for 12 months from date of receipt.



Western blot analysis of extracts from various samples, using GCH1 Antibody.
Lane 1: Mouse heart, treated with blocking peptide;
Lane 2: Mouse heart;
Lane 3: Rat brain.

Observed bands: 23 kDa.



Western blot analysis GCH1 using K562 whole cell lysates

IMPORTANT: For western blot, incubate membrane with diluted primary Ab in 5% w/v milk , 1X TBS, 0.1% Tween@20 at 4°C with gentle shaking, overnight.

For Research Use Only. Not for use in diagnostic and therapeutic procedures. Not for resale without express authorization.