

## Goat Anti-Rabbit IgG (H+L) FITC-conjugated

Cat.#: S0008  
Size: 50ul,100ul,200ul

Concn.: 1mg/ml  
Source: Goat

Mol.Wt.:  
Clonality: Polyclonal

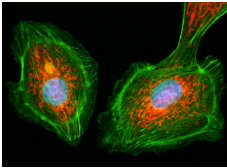
Application: WB 1:100 – 1:500, IF/ICC 1:100 – 1:500  
\*The optimal dilutions should be determined by the end user.

Reactivity: Rabbit

Purification: Affinity-chromatography.

Immunogen: The antiserum was developed in goat using the Rabbit IgG as the immunogen.

Storage Condition and Buffer: 0.01M Sodium phosphate, 0.25M NaCl, 50% glycerol, pH7.6.  
Store at -20°C□avoid repeated thawing and freezing.



Green: Goat Anti-Rabbit IgG(H+L) FITC-conjugated  
Blue: DAPI

**IMPORTANT:** For western blot, incubate membrane with diluted secondary Ab in 5% w/v milk, 1X TBS, 0.1% Tween@20 at 37°C, 2H.

For Research Use Only. Not for use in diagnostic and therapeutic procedures. Not for resale without express authorization.