

Goat Anti-Rabbit IgG (H+L) Fluor488-conjugated

Cat.#: S0018
Size: 100ul,200ul

Concn.: 1mg/ml
Source: Goat

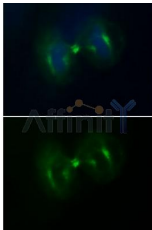
Mol.Wt.:
Clonality: Polyclonal

Application: WB 1:100 - 1:500, IF/ICC 1:100-1:500
*The optimal dilutions should be determined by the end user.

Reactivity: Rabbit

Immunogen: The antiserum was developed in goat using the Rabbit IgG as the immunogen.

Storage Condition and Buffer: 0.01M Sodium phosphate, 0.25M NaCl, 50% glycerol, pH7.6.
Store at -20°C □ avoid repeated thawing and freezing.



Immunofluorescence analysis of HepG2 cells during mitosis.
Green: Goat Anti-Rabbit IgG(H+L) Alexa Fluor488.
Blue: DAPI.

IMPORTANT: For western blot, incubate membrane with diluted secondary Ab in 5% w/v milk , 1X TBS, 0.1% Tween@20 at 37°C, 2H.

For Research Use Only. Not for use in diagnostic and therapeutic procedures. Not for resale without express authorization.