

Goat Anti-Rabbit IgG (H+L) HRP

[References\(266\)](#) [Images\(5\)](#)

Cat.#: S0001
Size: 100ul,1ml,500ul

Concn.: 1mg/ml
Source: Goat

Mol.Wt.:
Clonality: Polyclonal

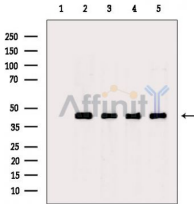
Application: WB 1:3000~1:10000, IHC 1:200
*The optimal dilutions should be determined by the end user.

Reactivity: Rabbit

Purification: affinity purification.

Immunogen: The antiserum was developed in goat using the Rabbit IgG as the immunogen.

Storage: HRP-labeled Goat IgG in phosphate buffered saline (without Mg²⁺ and Ca²⁺), pH 7.4, 150mM NaCl.



Western blot analysis of extracts from various samples, using beta Actin Ab as primary Ab, Goat Anti-Rabbit IgG (H+L) HRP Ab(#S0001) as secondary Ab.
Lane 1: Rat brain, blocked with antigen-specific peptides,
Lane 2: Rat brain,
Lane 3: Mouse brain,
Lane 4: HepG2 cells(LPS 4h treatment),
Lane 5: A549 cells(UV treatment).

IMPORTANT: For western blot, incubate membrane with diluted secondary Ab in 5% w/v milk, 1X TBS, 0.1% Tween@20 at 37°C, 2H.

For Research Use Only. Not for use in diagnostic and therapeutic procedures. Not for resale without express authorization.