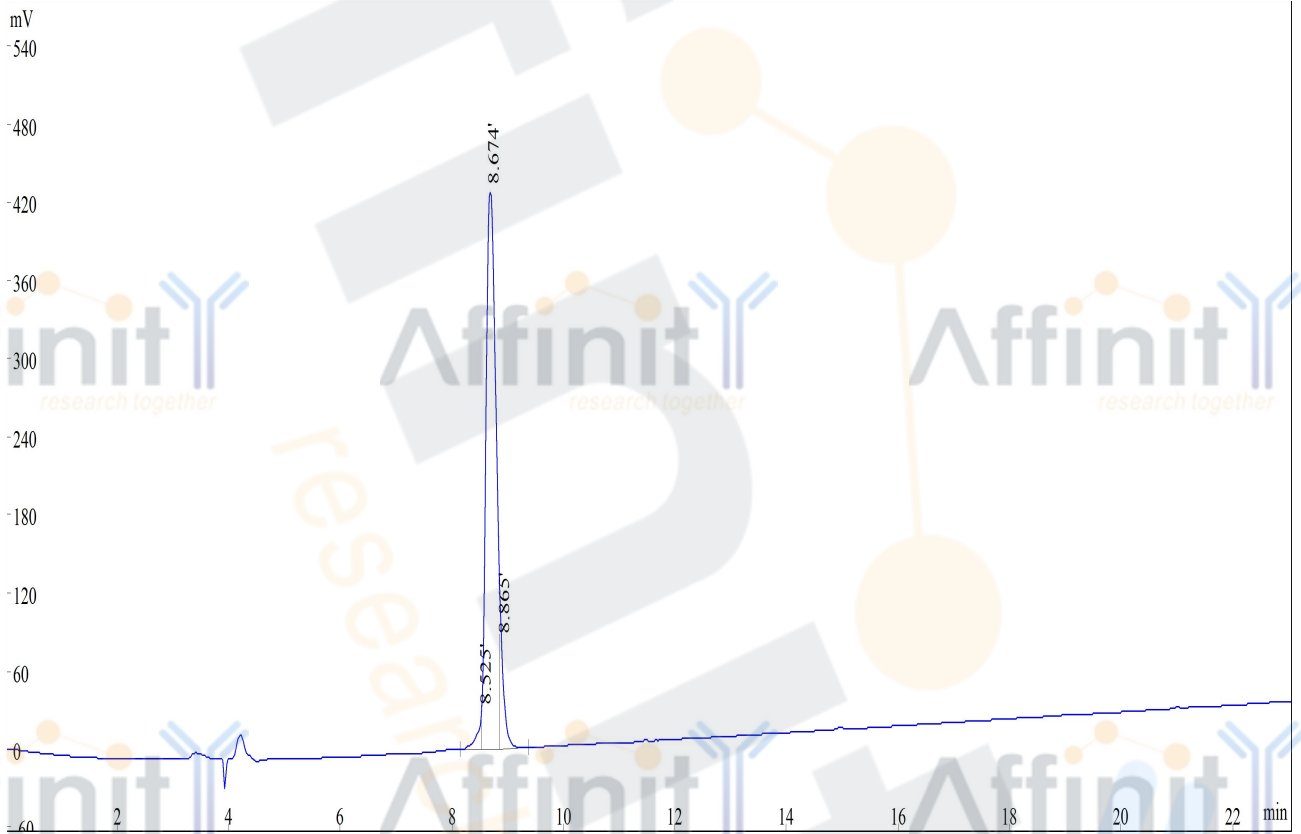


HPLC REPORT

Sample: G-16 Analyzed date: 2016-01-12
Analyst: FS
Lot. No.: P160108-SW631308
Column: 4.6*250mm, Welch CX-C18 5um
Solvent A: A: 0.1% Trifluoroacetic Acid in 100% Acetonitrile
Solvent B: B: 0.1% Trifluoroacetic Acid in 100% Water
Gradient:

| | A | B |
|---------|------|------|
| 0.0min | 8% | 92% |
| 25.0min | 33% | 67% |
| 25.1min | 100% | 0% |
| 30.0min | | Stop |

Volume: 20µl
Wavelength: 220nm
Flow rate: 1.0ml/min



| Rank | Time | Conc. | Area |
|-------|-------|-------|---------|
| 1 | 8.525 | 2.615 | 142596 |
| 2 | 8.674 | 91.83 | 5006773 |
| 3 | 8.865 | 5.556 | 302945 |
| Total | | 100 | 5452314 |