

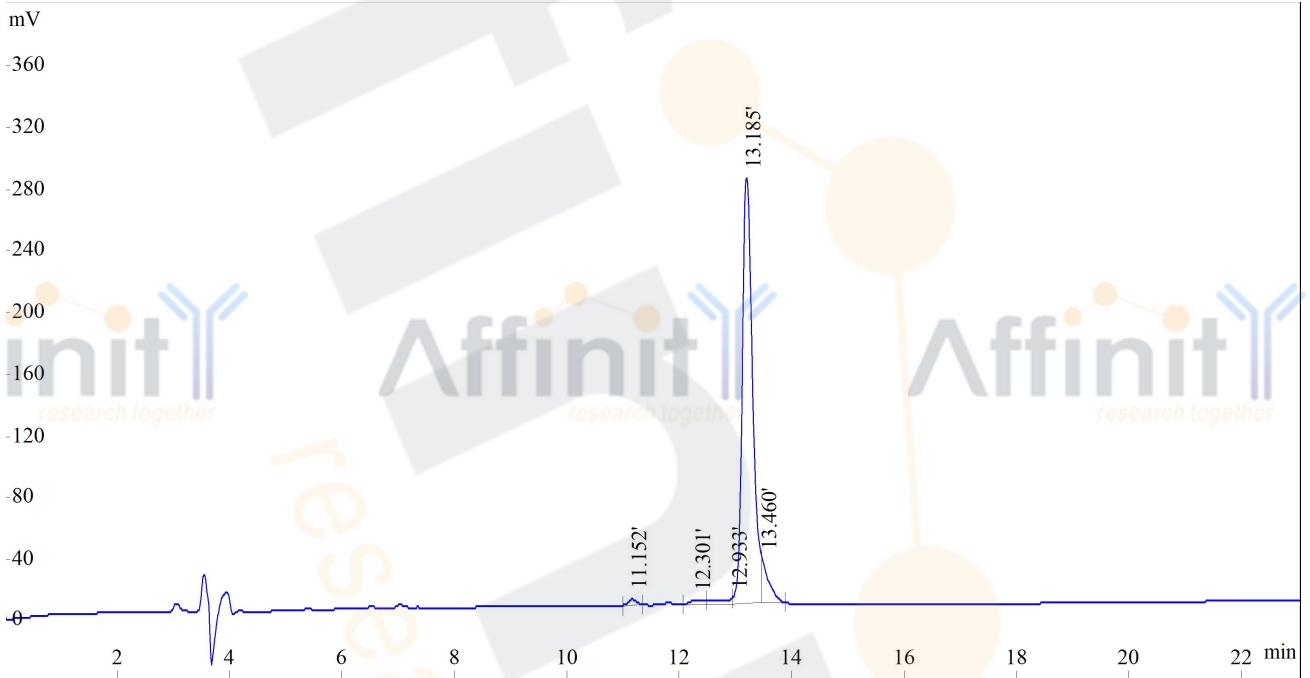
HPLC REPORT

Sample: E -15
Analyst: HXH
Lot. No.: P160108-MJ631285
Column: Gemini-NX 5 μ C18 110A, 4.6*250mm
Solvent A: A: 0.1% Trifluoroacetic Acid in 100% Acetonitrile
Solvent B: B: 0.1% Trifluoroacetic Acid in 100% Water
Gradient:

Analyzed date: 2016-01-19

| | A | B |
|---------|------|-----|
| 0.0min | 15% | 85% |
| 25.0min | 40% | 60% |
| 25.1min | 100% | 0% |
| 30.0min | Stop | |

Volume: 20 μ l
Wavelength: 220nm
Flow rate: 1.0ml/min



| Rank | Time | Conc. | Area | Height |
|-------|--------|---------|---------|--------|
| 1 | 11.152 | 0.9652 | 35150 | 3752 |
| 2 | 12.301 | 1.1244 | 40947 | 2410 |
| 3 | 12.933 | 1.5570 | 56703 | 3316 |
| 4 | 13.185 | 90.1424 | 3282774 | 275338 |
| 5 | 13.460 | 6.2110 | 226191 | 28528 |
| Total | 100 | | 3641765 | 313344 |