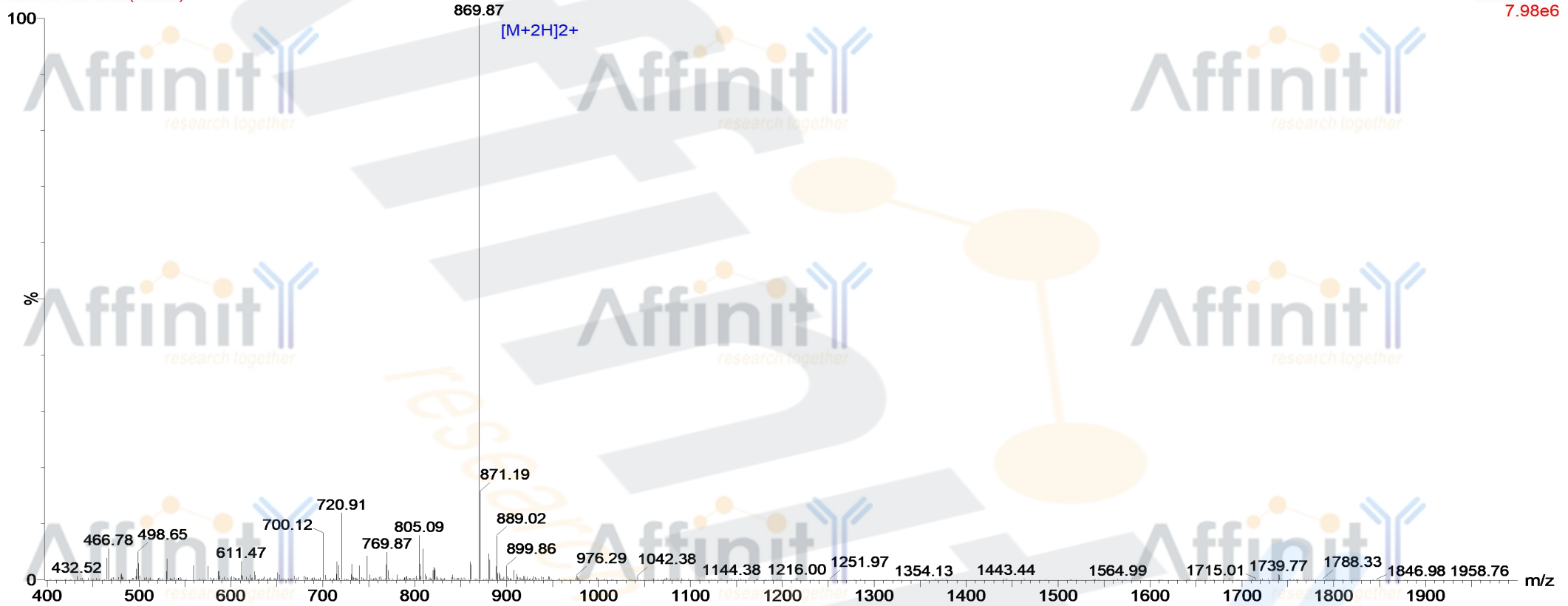


MASS SPECTROMETRY REPORT

19-Jan-2018
10:46:29

Probe: ESI
Cone: 50v
Desovation Temp :350
Capillary:3.00KV
Extractor: 5v
Gas Flow : 350
Scan ES+
7.98e6

180119-13 253 (4.676)



Sample Description

Analyzed date: 2016-01-19
Analyst: YU
Sample: E-15
M.W.: 1737.25
Lot. No.: P160108-MJ631285

Instrument

Waters ZQ2000
Probe: ESI
Nebulizer Gas Flow: 1.5L/min
CDL: -20.0v
CDL Temp.: 250 °C
Block Temp.: 200 °C

Probe Bias: + 4.5kv
Detector: 1.5kv
T. Flow: 0.2ml/min
B. Conc.: 50% H2O/50% ACN