

TRIP13 Ab

[References\(1\)](#) [Images\(6\)](#)

Cat.#: AF0570 Concn.: ~1mg/ml Mol.Wt.: 48kDa
Size: Source: Rabbit Clonality: Polyclonal

Application: WB 1:500-1:2000, IF/ICC 1:100-1:500, IHC 1:50-1:200
*The optimal dilutions should be determined by the end user.

Reactivity: Human,Mouse,Rat

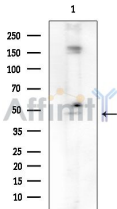
Storage: Rabbit IgG in phosphate buffered saline , pH 7.4, 150mM NaCl, 0.02% sodium azide and 50% glycerol. Store at -20 °C. Stable for 12 months from date of receipt.

Purification: The antiserum was purified by peptide affinity chromatography using SulfoLink™ Coupling Resin (Thermo Fisher Scientific).

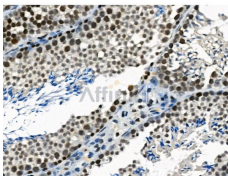
Immunogen: A synthesized peptide derived from human TRIP13, corresponding to a region within C-terminal amino acids.

Uniprot: Q15645

Description: Thyroid receptor interacting proteins (TRIPs) specifically interact with the ligand binding domain of the thyroid receptor (TR). TRIP13 does not require the presence of thyroid hormone for its interaction.



Western blot analysis of extracts from EC304 cells(heat-shock treatment), using TRIP13 Ab at 1/1000 dilution.
Observed bands:48kD.



AF0570 at 1/100 staining Mouse testis tissue by IHC-P. The sample was formaldehyde fixed and a heat mediated antigen retrieval step in citrate buffer was performed. The sample was then blocked and incubated with the primary Ab at 4°C overnight. An HRP conjugated anti-Rabbit Ab was used as the secondary Ab.

IMPORTANT: For western blot, incubate membrane with diluted primary Ab in 5% w/v milk , 1X TBS, 0.1% Tween@20 at 4°C with gentle shaking, overnight.



Affinity Biosciences

website: www.affbiotech.com

order: order@affbiotech.com

For Research Use Only. Not for use in diagnostic and therapeutic procedures. Not for resale without express authorization.