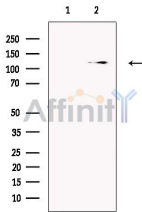


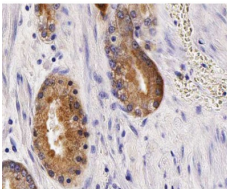
## TM16G Ab

[Images\(2\)](#)

Cat.#: AF0648	Concn.: ~1mg/ml	Mol.Wt.: 105kDa
Size:	Source: Rabbit	Clonality: Polyclonal
Application:	IHC 1:50-1:200, IF/ICC 1:100-1:500, WB 1:500-1:2000 *The optimal dilutions should be determined by the end user.	
Reactivity:	Human	
Storage:	Rabbit IgG in phosphate buffered saline , pH 7.4, 150mM NaCl, 0.02% sodium azide and 50% glycerol. Store at -20 °C. Stable for 12 months from date of receipt.	
Purification:	The antiserum was purified by peptide affinity chromatography using SulfoLink™ Coupling Resin (Thermo Fisher Scientific).	
Immunogen:	A synthesized peptide derived from human TM16G, corresponding to a region within the internal amino acids.	
Uniprot:	Q6IWH7	
Description:	May act as a calcium-activated chloride channel. May play a role in cell-cell interactions.	



Western blot analysis of extracts from LOVO, using TM16G Ab. The lane on the left was treated with blocking peptide.



AF0648 at 1/100 staining human Prostate tissue sections by IHC-P. The tissue was formaldehyde fixed and a heat mediated antigen retrieval step in citrate buffer was performed. The tissue was then blocked and incubated with the Ab for 1.5 hours at 22°C. An HRP conjugated goat anti-rabbit Ab was used as the secondary Ab.

**IMPORTANT:** For western blot, incubate membrane with diluted primary Ab in 5% w/v milk , 1X TBS, 0.1% Tween@20 at 4°C with gentle shaking, overnight.



**Affinity Biosciences**  
website: [www.affbiotech.com](http://www.affbiotech.com)  
order: [order@affbiotech.com](mailto:order@affbiotech.com)

---

procedures. Not for resale without express authorization.