

KSR2 Ab

[Images\(1\)](#)

Cat.#: AF0688
Size:

Concn.: ~1mg/ml
Source: Rabbit

Mol.Wt.: 108kDa
Clonality: Polyclonal

Application:

WB 1:500-1:2000, IF/ICC 1:100-1:500

*The optimal dilutions should be determined by the end user.

Reactivity:

Human, Mouse

Storage:

Rabbit IgG in phosphate buffered saline, pH 7.4, 150mM NaCl, 0.02% sodium azide and 50% glycerol. Store at -20 °C. Stable for 12 months from date of receipt.

Purification:

The antiserum was purified by peptide affinity chromatography using SulfoLink™ Coupling Resin (Thermo Fisher Scientific).

Immunogen:

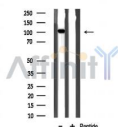
A synthesized peptide derived from human KSR2, corresponding to a region within the internal amino acids.

Uniprot:

Q6VAB6

Description:

KSR2 Location-regulated scaffold connecting MEK to RAF. Blocks MAP3K8 kinase activity and MAP3K8-mediated signaling. Acts as a negative regulator of MAP3K3-mediated activation of ERK, JNK and NF-kappa-B pathways, inhibiting MAP3K3-mediated interleukin-8 production. Belongs to the protein kinase superfamily. TKL Ser/Thr protein kinase family. Interacts with MAP2K1, MAP3K8, MAPK, RAS and RAF. 2 isoforms of the human protein are produced by alternative splicing.



Western blot analysis of KSR2 expression in Mouse brain lysate

IMPORTANT: For western blot, incubate membrane with diluted primary Ab in 5% w/v milk, 1X TBS, 0.1% Tween@20 at 4°C with gentle shaking, overnight.

For Research Use Only. Not for use in diagnostic and therapeutic procedures. Not for resale without express authorization.