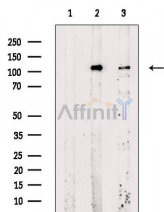


Phospho-Retinoblastoma (Ser612) Ab

[Images\(2\)](#)

Cat.#: AF8057	Concn.: ~1mg/ml	Mol.Wt.: 110kDa
Size:	Source: Rabbit	Clonality: Polyclonal

Application:	WB 1:1000-3000, IF/ICC 1:100-1:500 *The optimal dilutions should be determined by the end user.
Reactivity:	Human,Mouse,Monkey
Storage:	Rabbit IgG in phosphate buffered saline , pH 7.4, 150mM NaCl, 0.02% sodium azide and 50% glycerol. Store at -20 °C. Stable for 12 months from date of receipt.
Purification:	The Ab is from purified rabbit serum by affinity purification via sequential chromatography on phospho-peptide and non-phospho-peptide affinity columns.
Immunogen:	A synthesized peptide derived from human Retinoblastoma around the phosphorylation site of Ser612.
Uniprot:	P06400



Western blot analysis of extracts from various samples, using Phospho-Retinoblastoma (Ser612) Ab.

Lane 1: P19 cells(heat shock treatment), blocked with antigen-specific peptides,

Lane 2: P19 cells(heat shock treatment),

Lane 3: VERO cells(serum starvation treatment).

IMPORTANT: For western blot, incubate membrane with diluted primary Ab in 5% w/v milk , 1X TBS, 0.1% Tween@20 at 4°C with gentle shaking, overnight.

For Research Use Only. Not for use in diagnostic and therapeutic procedures. Not for resale without express authorization.