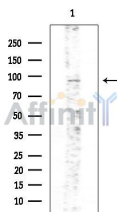


Phospho-PKD2 (Ser812) Ab

[Images\(4\)](#)

Cat.#: AF8092	Concn.: ~1mg/ml	Mol.Wt.: 96KD
Size:	Source: Rabbit	Clonality: Polyclonal

Application:	WB 1:1000-3000 *The optimal dilutions should be determined by the end user.
Reactivity:	Human,Mouse,Rat,Monkey
Storage:	Rabbit IgG in phosphate buffered saline , pH 7.4, 150mM NaCl, 0.02% sodium azide and 50% glycerol. Store at -20 °C. Stable for 12 months from date of receipt.
Purification:	The Ab is from purified rabbit serum by affinity purification via sequential chromatography on phospho-peptide and non-phospho-peptide affinity columns.
Immunogen:	A synthesized peptide derived from human PKD2 around the phosphorylation site of Ser812.
Uniprot:	Q13563



Western blot analysis of extracts from Mouse testis, using Phospho-PKD2 (Ser812) Ab at 1/1000 dilution.
Observed bands:90kD.

IMPORTANT: For western blot, incubate membrane with diluted primary Ab in 5% w/v milk , 1X TBS, 0.1% Tween@20 at 4°C with gentle shaking, overnight.

For Research Use Only. Not for use in diagnostic and therapeutic procedures. Not for resale without express authorization.