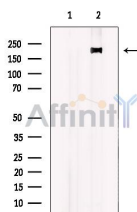


## ALPK2 Ab

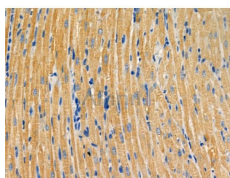
[Images\(6\)](#)

Cat.#: AF0666	Concn.: ~1mg/ml	Mol.Wt.: 210kDa
Size:	Source: Rabbit	Clonality: Polyclonal

Application:	WB 1:500-1:2000, IHC 1:50-1:200 *The optimal dilutions should be determined by the end user.
Reactivity:	Human, Mouse, Rat
Storage:	Rabbit IgG in phosphate buffered saline, pH 7.4, 150mM NaCl, 0.02% sodium azide and 50% glycerol. Store at -20 °C. Stable for 12 months from date of receipt.
Purification:	The antiserum was purified by peptide affinity chromatography using SulfoLink™ Coupling Resin (Thermo Fisher Scientific).
Immunogen:	A synthesized peptide derived from human ALPK2, corresponding to a region within the internal amino acids.
Uniprot:	Q86TB3
Description:	AlphaK2 Kinases that recognize phosphorylation sites in which the surrounding peptides have an alpha-helical conformation. Belongs to the protein kinase superfamily. Alpha-type protein kinase family. ALPK subfamily. 2 isoforms of the human protein are produced by alternative splicing.



Western blot analysis of extracts from mouse brain, using ALPK2 Ab. The lane on the left was treated with blocking peptide.



AF0666 at 1/100 staining Rat heart tissue by IHC-P. The sample was formaldehyde fixed and a heat mediated antigen retrieval step in citrate buffer was performed. The sample was then blocked and incubated with the primary Ab at 4°C overnight. An HRP conjugated anti-Rabbit Ab was used as the secondary Ab.

**IMPORTANT:** For western blot, incubate membrane with diluted primary Ab in 5% w/v milk, 1X TBS, 0.1% Tween@20 at 4°C with gentle shaking,

---

overnight.

---

For Research Use Only. Not for use in diagnostic and therapeutic procedures. Not for resale without express authorization.