

Phospho-Tau (Ser717/Ser400) Ab

[Images\(2\)](#)

Cat.#: AF8129

Size:

Concn.: ~1mg/ml

Source: Rabbit

Mol.Wt.: 50-80kDa

Clonality: Polyclonal

Application:

WB 1:1000-3000

*The optimal dilutions should be determined by the end user.

Reactivity:

Human, Mouse, Rat

Storage:

Rabbit IgG in phosphate buffered saline, pH 7.4, 150mM NaCl, 0.02% sodium azide and 50% glycerol. Store at -20 °C. Stable for 12 months from date of receipt.

Purification:

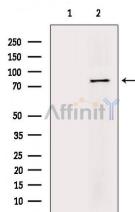
The Ab is from purified rabbit serum by affinity purification via sequential chromatography on phospho-peptide and non-phospho-peptide affinity columns.

Immunogen:

A synthesized peptide derived from human Tau around the phosphorylation site of Ser717/400.

Uniprot:

P10636



Western blot analysis of extracts from HepG2 cells (H₂O₂ treatment), using Phospho-Tau (Ser717/Ser400) Ab. The lane on the left was treated with blocking peptide.

IMPORTANT: For western blot, incubate membrane with diluted primary Ab in 5% w/v milk, 1X TBS, 0.1% Tween@20 at 4°C with gentle shaking, overnight.

For Research Use Only. Not for use in diagnostic and therapeutic procedures. Not for resale without express authorization.