

## DGKH Ab

[Images\(4\)](#)

Cat.#: AF0611	Concn.: ~1mg/ml	Mol.Wt.: 134kDa
Size:	Source: Rabbit	Clonality: Polyclonal

Application: IHC 1:50-1:200, IF/ICC 1:100-1:500, WB 1:500-1:2000  
\*The optimal dilutions should be determined by the end user.

Reactivity: Human, Mouse, Rat

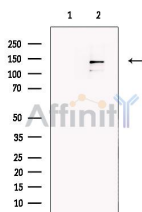
Storage: Rabbit IgG in phosphate buffered saline, pH 7.4, 150mM NaCl, 0.02% sodium azide and 50% glycerol. Store at -20 °C. Stable for 12 months from date of receipt.

Purification: The antiserum was purified by peptide affinity chromatography using SulfoLink™ Coupling Resin (Thermo Fisher Scientific).

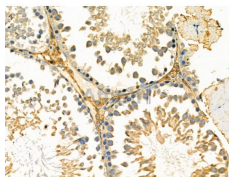
Immunogen: A synthesized peptide derived from human DGKH, corresponding to a region within the internal amino acids.

Uniprot: Q86XP1

Description: This gene encodes a member of the diacylglycerol kinase (DGK) enzyme family of proteins, specifically the type II DGK subfamily. Members of this family are involved in regulating the intracellular concentrations of diacylglycerol and phosphatidic acid. Two transcript variants encoding distinct isoforms have been identified for this gene.



Western blot analysis of extracts from Human Fetal heart, using DGKH Ab. The lane on the left was treated with blocking peptide.



AF0611 at 1/100 staining Rat testis tissue by IHC-P. The sample was formaldehyde fixed and a heat mediated antigen retrieval step in citrate buffer was performed. The sample was then blocked and incubated with the primary Ab at 4°C overnight. An HRP conjugated anti-Rabbit Ab was used as the secondary Ab.

**IMPORTANT:** For western blot, incubate membrane with diluted primary Ab in 5% w/v milk, 1X TBS, 0.1% Tween@20 at 4°C with gentle shaking,

---

overnight.

---

For Research Use Only. Not for use in diagnostic and therapeutic procedures. Not for resale without express authorization.