

mGluR7 Ab

[References\(2\)](#) [Images\(2\)](#)

Cat.#: AF0171	Concn.: ~1mg/ml	Mol.Wt.: 100kDa, 80 kDa
Size:	Source: Rabbit	Clonality: Polyclonal

Application: WB 1:500-1:3000, IHC 1:50-1:200, IF/ICC 1:100-1:500
*The optimal dilutions should be determined by the end user.

Reactivity: Human, Mouse, Rat

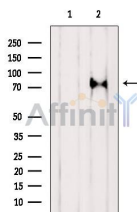
Storage: Rabbit IgG in phosphate buffered saline, pH 7.4, 150mM NaCl, 0.02% sodium azide and 50% glycerol. Store at -20 °C. Stable for 12 months from date of receipt.

Purification: The antiserum was purified by peptide affinity chromatography using SulfoLink™ Coupling Resin (Thermo Fisher Scientific).

Immunogen: A synthesized peptide derived from human mGluR7, corresponding to a region within C-terminal amino acids.

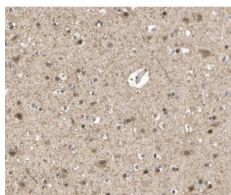
Uniprot: Q14831

Description: mGluR7 Receptor for glutamate. The activity of this receptor is mediated by a G-protein that inhibits adenylate cyclase activity. Belongs to the G-protein coupled receptor 3 family. Interacts with PICK1. 5 isoforms of the human protein are produced by alternative splicing.



Western blot analysis of extracts from 3T3, using mGluR7 Ab. The lane on the left was treated with blocking peptide.

Observed bands: 80 kDa.



AF0171 at 1/100 staining human brain tissue sections by IHC-P. The tissue was formaldehyde fixed and a heat mediated antigen retrieval step in citrate buffer was performed. The tissue was then blocked and incubated with the Ab for 1.5 hours at 22°C. An HRP conjugated goat anti-rabbit Ab was used as the secondary Ab.

IMPORTANT: For western blot, incubate membrane with diluted primary Ab in 5% w/v milk, 1X TBS, 0.1% Tween@20 at 4°C with gentle shaking, overnight.



Affinity Biosciences

website: www.affbiotech.com

order: order@affbiotech.com

For Research Use Only. Not for use in diagnostic and therapeutic procedures. Not for resale without express authorization.