

Phospho-VE-Cadherin (Tyr658) Ab

[References\(1\)](#) [Images\(4\)](#)

Cat.#: AF8206

Concn.: ~1mg/ml

Mol.Wt.: 130kDa

Size:

Source: Rabbit

Clonality: Polyclonal

Application:

WB 1:1000-3000

*The optimal dilutions should be determined by the end user.

Reactivity:

Human,Mouse

Storage:

Rabbit IgG in phosphate buffered saline , pH 7.4, 150mM NaCl, 0.02% sodium azide and 50% glycerol. Store at -20 °C. Stable for 12 months from date of receipt.

Purification:

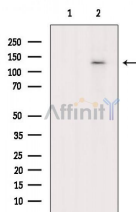
The Ab is from purified rabbit serum by affinity purification via sequential chromatography on phospho-peptide and non-phospho-peptide affinity columns.

Immunogen:

A synthesized peptide derived from human VE-Cadherin around the phosphorylation site of Tyr658.

Uniprot:

P33151



Western blot analysis of extracts from Mouse heart, using Phospho-VE-Cadherin (Tyr658) Ab. The lane on the left was treated with blocking peptide.

IMPORTANT: For western blot, incubate membrane with diluted primary Ab in 5% w/v milk , 1X TBS, 0.1% Tween@20 at 4°C with gentle shaking, overnight.

For Research Use Only. Not for use in diagnostic and therapeutic procedures. Not for resale without express authorization.