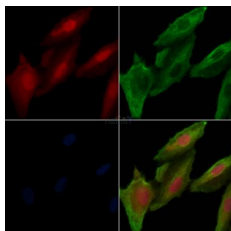


## Phospho-BTK (Ser179) Ab

[Images\(2\)](#)

|               |   |                       |
|---------------|---|-----------------------|
| Cat.#: AF8361 | Concn.: ~1mg/ml   | Mol.Wt.: 80kDa        |
| Size:         | Source: Rabbit  | Clonality: Polyclonal |
| Application:  | WB 1:1000-3000, IF/ICC 1:100-1:500<br>*The optimal dilutions should be determined by the end user.  |                       |
| Reactivity:   | Human, Mouse, Rat   |                       |
| Storage:      | Rabbit IgG in phosphate buffered saline, pH 7.4, 150mM NaCl, 0.02% sodium azide and 50% glycerol. Store at -20 °C. Stable for 12 months from date of receipt. |                       |
| Purification: | The Ab is from purified rabbit serum by affinity purification via sequential chromatography on phospho-peptide and non-phospho-peptide affinity columns.      |                       |
| Immunogen:    | A synthesized peptide derived from human BTK around the phosphorylation site of Ser179.   |                       |
| Uniprot:      | Q06187  |                       |



AF8361 staining A549 cells (H<sub>2</sub>O<sub>2</sub> treatment) by IF/ICC. The samples were fixed with PFA and permeabilized in 0.1% Triton X-100, then blocked in 10% serum for 45 minutes at 25°C. Samples were then incubated with primary Ab (#AF8361) and mouse anti-beta tubulin Ab (#T0023) for 1 hour at 37°C. An AlexaFluor594 conjugated goat anti-rabbit IgG Ab (Red) and an AlexaFluor488 conjugated goat anti-mouse IgG Ab (Green) were used as the secondary Ab. The nuclear counter stain is DAPI (blue).

**IMPORTANT:** For western blot, incubate membrane with diluted primary Ab in 5% w/v milk, 1X TBS, 0.1% Tween@20 at 4°C with gentle shaking, overnight.

For Research Use Only. Not for use in diagnostic and therapeutic procedures. Not for resale without express authorization.