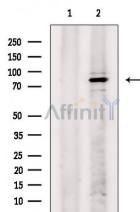


Phospho-SYK (Tyr525+Tyr526) Ab

[References\(1\)](#) [Images\(3\)](#)

Cat.#: AF8404	Concn.: ~1mg/ml	Mol.Wt.: 80kDa
Size:	Source: Rabbit	Clonality: Polyclonal
Application:	WB 1:1000-3000, IF/ICC 1:100-1:500 *The optimal dilutions should be determined by the end user.	
Reactivity:	Human,Mouse,Rat,Monkey	
Storage:	Rabbit IgG in phosphate buffered saline , pH 7.4, 150mM NaCl, 0.02% sodium azide and 50% glycerol. Store at -20 °C. Stable for 12 months from date of receipt.	
Purification:	The Ab is from purified rabbit serum by affinity purification via sequential chromatography on phospho-peptide and non-phospho-peptide affinity columns.	
Immunogen:	A synthesized peptide derived from human SYK around the phosphorylation site of Tyr525+Tyr526.	
Uniprot:	P43405	



Western blot analysis of extracts from HepG2 cells(heat shock treatment), using Phospho-SYK (Tyr525+Tyr526) Ab. The lane on the left was treated with blocking peptide.

IMPORTANT: For western blot, incubate membrane with diluted primary Ab in 5% w/v milk , 1X TBS, 0.1% Tween@20 at 4°C with gentle shaking, overnight.

For Research Use Only. Not for use in diagnostic and therapeutic procedures. Not for resale without express authorization.