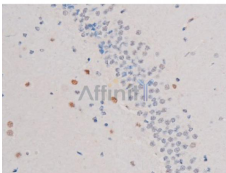


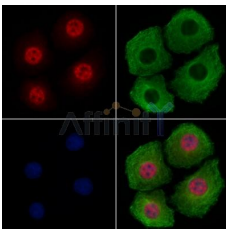
## Phospho-IRS1 (Ser636) Ab

[References\(1\)](#) [Images\(14\)](#)

<b>Cat.#:</b> AF3274	<b>Concn.:</b> ~1mg/ml	<b>Mol.Wt.:</b> 180kDa
<b>Size:</b>	<b>Source:</b> Rabbit	<b>Clonality:</b> Polyclonal
<b>Application:</b>	WB 1:500-1:2000, IHC 1:50-1:200, IF/ICC 1:100-1:500 *The optimal dilutions should be determined by the end user.	
<b>Reactivity:</b>	Human, Mouse, Rat, Monkey	
<b>Storage:</b>	Rabbit IgG in phosphate buffered saline , pH 7.4, 150mM NaCl, 0.02% sodium azide and 50% glycerol. Store at -20 °C. Stable for 12 months from date of receipt.	
<b>Purification:</b>	The Ab is from purified rabbit serum by affinity purification via sequential chromatography on phospho-peptide and non-phospho-peptide affinity columns.	
<b>Immunogen:</b>	A synthesized peptide derived from human IRS1 around the phosphorylation site of Ser636.	
<b>Uniprot:</b>	P35568	
<b>Description:</b>	IRS-1 is an adaptor protein that is one of the major substrates of the insulin receptor kinase. Contains multiple tyrosine phosphorylation motifs that serve as docking sites for SH2-domain-containing proteins including phosphatidylinositol 3-kinase p85 subunit and GRB-2.	



AF3274 at 1/200 staining Rat brain tissue sections by IHC-P. The tissue was formaldehyde fixed and a heat mediated antigen retrieval step in citrate buffer was performed. The tissue was then blocked and incubated with the Ab for 1.5 hours at 22°C. An HRP conjugated goat anti-rabbit Ab was used as the secondary Ab.



AF3274 staining HeLa cells (4h of LPS treatment) by IF/ICC. The samples were fixed with PFA and permeabilized in 0.1% Triton X-100, then blocked in 10% serum for 45 minutes at 25°C. Samples were then incubated with primary Ab (AF3274 1:200) and mouse anti-beta tubulin Ab (T0023 1:200) for 1 hour at 37°C. An AlexaFluor594 conjugated goat anti-rabbit IgG(H+L) Ab (Red) and an AlexaFluor488 conjugated goat anti-mouse IgG(H+L) Ab (Green) were used as the secondary Ab.

The nuclear counter stain is DAPI (blue).

**IMPORTANT:** For western blot, incubate membrane with diluted primary Ab in 5% w/v milk , 1X TBS, 0.1% Tween@20 at 4°C with gentle shaking,



**Affinity Biosciences**  
website: [www.affbiotech.com](http://www.affbiotech.com)  
order: [order@affbiotech.com](mailto:order@affbiotech.com)

---

overnight.

For Research Use Only. Not for use in diagnostic and therapeutic procedures. Not for resale without express authorization.