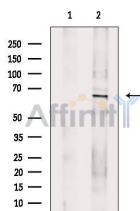


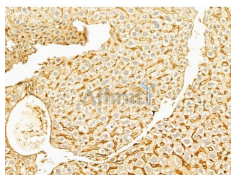
Phospho-YAP (Ser127) Ab

[References\(18\)](#) [Images\(16\)](#)

Cat.#: AF3328	Concn.: ~1mg/ml	Mol.Wt.: 65~78kD
Size:	Source: Rabbit	Clonality: Polyclonal
Application:	WB 1:500-1:2000, IHC 1:50-1:200, IF/ICC 1:100-1:500 *The optimal dilutions should be determined by the end user.	
Reactivity:	Human, Mouse, Rat, Monkey	
Storage:	Rabbit IgG in phosphate buffered saline, pH 7.4, 150mM NaCl, 0.02% sodium azide and 50% glycerol. Store at -20 °C. Stable for 12 months from date of receipt.	
Purification:	The Ab is from purified rabbit serum by affinity purification via sequential chromatography on phospho-peptide and non-phospho-peptide affinity columns.	
Immunogen:	A synthesized peptide derived from human YAP around the phosphorylation site of Ser127.	
Uniprot:	P46937	
Description:	This gene encodes the human ortholog of chicken YAP protein which binds to the SH3 domain of the Yes proto-oncogene product. This protein contains a WW domain that is found in various structural, regulatory and signaling molecules in yeast, nematode, and mammals, and may be involved in protein-protein interaction.	



Western blot analysis of extracts from UV treated MCF7 cells, using Phospho-YAP (Ser127) Ab. The lane on the left was treated with blocking peptide.



AF3328 at 1/100 staining Mouse liver tissue by IHC-P. The sample was formaldehyde fixed and a heat mediated antigen retrieval step in citrate buffer was performed. The sample was then blocked and incubated with the primary Ab at 4°C overnight. An HRP conjugated anti-Rabbit Ab was used as the secondary Ab.

IMPORTANT: For western blot, incubate membrane with diluted primary Ab

in 5% w/v milk , 1X TBS, 0.1% Tween@20 at 4°C with gentle shaking,
overnight.

For Research Use Only. Not for use in diagnostic and therapeutic
procedures. Not for resale without express authorization.