

GLUT3 Ab

[References\(1\)](#) [Images\(1\)](#)

Cat.#: AF0174	Concn.: ~1mg/ml	Mol.Wt.: 54kDa
Size:	Source: Rabbit	Clonality: Polyclonal

Application: WB 1:500-1:3000, IHC 1:50-1:200, IF/ICC 1:100-1:500
*The optimal dilutions should be determined by the end user.

Reactivity: Human

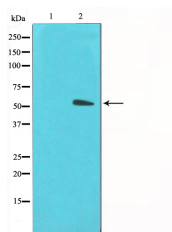
Storage: Rabbit IgG in phosphate buffered saline , pH 7.4, 150mM NaCl, 0.02% sodium azide and 50% glycerol. Store at -20 °C. Stable for 12 months from date of receipt.

Purification: The antiserum was purified by peptide affinity chromatography using SulfoLink™ Coupling Resin (Thermo Fisher Scientific).

Immunogen: A synthesized peptide derived from human GLUT3, corresponding to a region within C-terminal amino acids.

Uniprot: P11169

Description: GLUT3 an integral membrane facilitative glucose transporter. One of 13 members of the human equilibrative glucose transport protein family. It s surface expression is induced by insulin. It is restricted in humans to brain, testis (in the spermatozoa), and skeletal muscle, mostly in triads of slow-twitch fibres. Detected only in the brain of mouse and rat.



Western blot analysis on LOVO cell lysates using GLUT3 Ab, The lane on the left was treated with the antigen-specific peptide.

IMPORTANT: For western blot, incubate membrane with diluted primary Ab in 5% w/v milk , 1X TBS, 0.1% Tween@20 at 4°C with gentle shaking, overnight.

For Research Use Only. Not for use in diagnostic and therapeutic procedures. Not for resale without express authorization.