

## Phospho-HSP105 (Ser809) Ab

[Images\(2\)](#)

Cat.#: AF8484	Concn.: ~1mg/ml	Mol.Wt.: 100kDa, 120kDa
Size:	Source: Rabbit	Clonality: Polyclonal

Application: WB 1:1000-3000

\*The optimal dilutions should be determined by the end user.

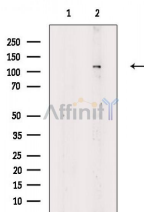
Reactivity: Human, Mouse, Rat

Storage: Rabbit IgG in phosphate buffered saline, pH 7.4, 150mM NaCl, 0.02% sodium azide and 50% glycerol. Store at -20 °C. Stable for 12 months from date of receipt.

Purification: The Ab is from purified rabbit serum by affinity purification via sequential chromatography on phospho-peptide and non-phospho-peptide affinity columns.

Immunogen: A synthesized peptide derived from human HSP105 around the phosphorylation site of Ser809.

Uniprot: Q92598



Western blot analysis of extracts from RAW264.7 cells (4h treatment), using Phospho-HSP105 (Ser809) Ab. The lane on the left was treated with blocking peptide.

Observed bands: 120kDa

**IMPORTANT:** For western blot, incubate membrane with diluted primary Ab in 5% w/v milk, 1X TBS, 0.1% Tween@20 at 4°C with gentle shaking, overnight.

For Research Use Only. Not for use in diagnostic and therapeutic procedures. Not for resale without express authorization.