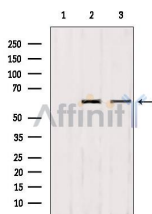


## Phospho-PTRF (Tyr156) Ab

[Images\(3\)](#)

Cat.#: AF8504	Concn.: ~1mg/ml	Mol.Wt.: 60 kDa
Size:	Source: Rabbit	Clonality: Polyclonal

Application:	IF/ICC 1:100-1:500, WB 1:1000-3000 *The optimal dilutions should be determined by the end user.
Reactivity:	Human, Mouse, Rat, Monkey
Storage:	Rabbit IgG in phosphate buffered saline, pH 7.4, 150mM NaCl, 0.02% sodium azide and 50% glycerol. Store at -20 °C. Stable for 12 months from date of receipt.
Purification:	The Ab is from purified rabbit serum by affinity purification via sequential chromatography on phospho-peptide and non-phospho-peptide affinity columns.
Immunogen:	A synthesized peptide derived from human PTRF around the phosphorylation site of Tyr156.
Uniprot:	Q6NZI2

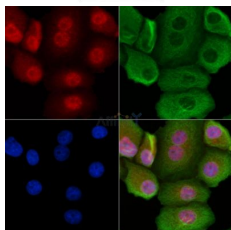


Western blot analysis of extracts from various samples, using PTRF (Phospho-Tyr156) Ab.

Lane 1: HeLa treated with blocking peptide.

Lane 2: HeLa;

Lane 3: mouse lung;



AF8504 staining HepG2 cells by IF/ICC. The samples were fixed with PFA and permeabilized in 0.1% Triton X-100, then blocked in 10% serum for 45 minutes at 25°C. Samples were then incubated with primary Ab(#AF8504) and mouse anti-beta tubulin Ab(#T0023) for 1 hour at 37°C. An AlexaFluor594 conjugated goat anti-rabbit IgG Ab(Red) and an AlexaFluor488 conjugated goat anti-mouse IgG Ab(Green) were used as the secondary Ab.

The nuclear counter stain is DAPI (blue).

**IMPORTANT:** For western blot, incubate membrane with diluted primary Ab in 5% w/v milk, 1X TBS, 0.1% Tween@20 at 4°C with gentle shaking, overnight.

For Research Use Only. Not for use in diagnostic and therapeutic procedures. Not for resale without express authorization.