

ATP6V0A2 Ab

[Images\(3\)](#)

Cat.#: DF10006
Size:

Concn.: ~1mg/ml
Source: Rabbit

Mol.Wt.: 98 kDa
Clonality: Polyclonal

Application: IHC 1:50-1:200, WB 1:1000-3000

*The optimal dilutions should be determined by the end user.

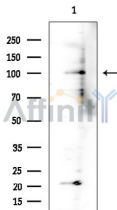
Reactivity: Human

Storage: Rabbit IgG in phosphate buffered saline , pH 7.4, 150mM NaCl, 0.02% sodium azide and 50% glycerol. Store at -20 °C. Stable for 12 months from date of receipt.

Purification: The antiserum was purified by peptide affinity chromatography using SulfoLink™ Coupling Resin (Thermo Fisher Scientific).

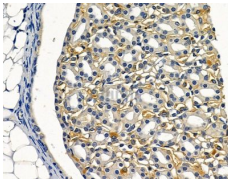
Immunogen: A synthesized peptide derived from human ATP6V0A2, corresponding to a region within the internal amino acids.

Uniprot: Q9Y487



Western blot analysis of extracts from Rat brain, using ATP6V0A2 Ab at 1/1000 dilution.

Observed bands:100kD.



DF10006 at 1/100 staining mouse kidney tissue by IHC-P. The sample was formaldehyde fixed and a heat mediated antigen retrieval step in citrate buffer was performed. The sample was then blocked and incubated with the primary Ab at 4°C overnight. An HRP conjugated anti-rabbit Ab was used as the secondary Ab.

IMPORTANT: For western blot, incubate membrane with diluted primary Ab in 5% w/v milk , 1X TBS, 0.1% Tween@20 at 4°C with gentle shaking, overnight.

For Research Use Only. Not for use in diagnostic and therapeutic procedures. Not for resale without express authorization.