

DLEC1 Ab

[Images\(2\)](#)

Cat.#: AF0665	Concn.: ~1mg/ml	Mol.Wt.: 195kDa
Size:	Source: Rabbit	Clonality: Polyclonal

Application: IHC 1:50-1:200, IF/ICC 1:100-1:500, WB 1:500-1:2000
*The optimal dilutions should be determined by the end user.

Reactivity: Human

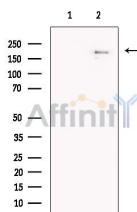
Storage: Rabbit IgG in phosphate buffered saline , pH 7.4, 150mM NaCl, 0.02% sodium azide and 50% glycerol. Store at -20 °C. Stable for 12 months from date of receipt.

Purification: The antiserum was purified by peptide affinity chromatography using SulfoLink™ Coupling Resin (Thermo Fisher Scientific).

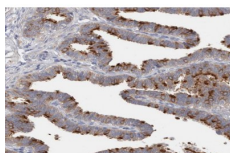
Immunogen: A synthesized peptide derived from human DLEC1, corresponding to a region within N-terminal amino acids.

Uniprot: Q9Y238

Description: The DLEC1 (deleted in lung cancer-1) gene contains 37 exons, spans approximately 59-kb, and is located in the 3p22-p21.3 chromosomal segment that is commonly deleted in various carcinomas. Several alternatively spliced DLEC1 transcripts contain disrupted coding regions and are likely to encode nonfunctional proteins. Aberrant transcription of DLEC1 may be involved in carcinogenesis of the lung, esophagus, and kidney.



Western blot analysis of extracts from U2 OS, using DLEC1 Ab. The lane on the left was treated with blocking peptide.



AF0665 at 1/100 staining human Fallopian tube tissue sections by IHC-P. The tissue was formaldehyde fixed and a heat mediated antigen retrieval step in citrate buffer was performed. The tissue was then blocked and incubated with the Ab for 1.5 hours at 22°C. An HRP conjugated goat anti-rabbit Ab was used as the secondary Ab.

IMPORTANT: For western blot, incubate membrane with diluted primary Ab in 5% w/v milk , 1X TBS, 0.1% Tween@20 at 4°C with gentle shaking, overnight.

For Research Use Only. Not for use in diagnostic and therapeutic procedures. Not for resale without express authorization.