

## ADAM8 Ab

[Images\(1\)](#)

Cat.#: DF10153  
Size:

Concn.: ~1mg/ml  
Source: Rabbit

Mol.Wt.: 89 kDa  
Clonality: Polyclonal

Application:

WB 1:1000-3000, IHC 1:50-1:200

\*The optimal dilutions should be determined by the end user.

Reactivity:

Human,Rat

Storage:

Rabbit IgG in phosphate buffered saline , pH 7.4, 150mM NaCl, 0.02% sodium azide and 50% glycerol. Store at -20 °C. Stable for 12 months from date of receipt.

Purification:

The antiserum was purified by peptide affinity chromatography using SulfoLink™ Coupling Resin (Thermo Fisher Scientific).

Immunogen:

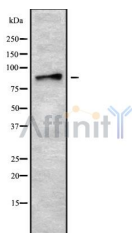
A synthesized peptide derived from human ADAM8, corresponding to a region within the internal amino acids.

Uniprot:

P78325

Description:

Protein names Recommended name: Disintegrin and metalloproteinase domain-containing protein 8 (EC:3.4.24.-) Short name: ADAM 8  
Alternative name(s): Cell surface antigen MS2 CD\_antigen: CD156a Gene names Name:ADAM8 Synonyms:MS2



Western blot analysis of ADAM8 using HepG2 whole cell lysates

**IMPORTANT:** For western blot, incubate membrane with diluted primary Ab in 5% w/v milk , 1X TBS, 0.1% Tween@20 at 4°C with gentle shaking, overnight.

For Research Use Only. Not for use in diagnostic and therapeutic procedures. Not for resale without express authorization.