

KLRC2/4 Ab

[References\(1\)](#) [Images\(2\)](#)

Cat.#: DF10154
Size:

Concn.: ~1mg/ml
Source: Rabbit

Mol.Wt.: 18 kDa
Clonality: Polyclonal

Application:

WB 1:1000-3000, IHC 1:50-1:200

*The optimal dilutions should be determined by the end user.

Reactivity:

Human,Mouse,Rat

Storage:

Rabbit IgG in phosphate buffered saline , pH 7.4, 150mM NaCl, 0.02% sodium azide and 50% glycerol. Store at -20 °C. Stable for 12 months from date of receipt.

Purification:

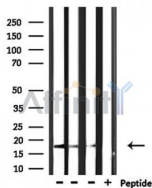
The antiserum was purified by peptide affinity chromatography using SulfoLink™ Coupling Resin (Thermo Fisher Scientific).

Immunogen:

A synthesized peptide derived from human KLRC2/4, corresponding to a region within N-terminal amino acids.

Uniprot:

P26717/O43908



Western blot analysis of extracts from mouse muscle ,HepG2,mouse liver, using KLRC2/4 Ab.

IMPORTANT: For western blot, incubate membrane with diluted primary Ab in 5% w/v milk , 1X TBS, 0.1% Tween@20 at 4°C with gentle shaking, overnight.

For Research Use Only. Not for use in diagnostic and therapeutic procedures. Not for resale without express authorization.