

TAS1R1 Ab

[References\(1\)](#) [Images\(3\)](#)

Cat.#: DF10278

Size:

Concn.: ~1mg/ml

Source: Rabbit

Mol.Wt.: 93kDa

Clonality: Polyclonal

Application:

WB 1:1000-3000

*The optimal dilutions should be determined by the end user.

Reactivity:

Human,Mouse,Rat

Storage:

Rabbit IgG in phosphate buffered saline , pH 7.4, 150mM NaCl, 0.02% sodium azide and 50% glycerol. Store at -20 °C. Stable for 12 months from date of receipt.

Purification:

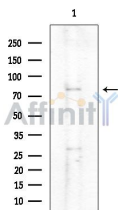
The antiserum was purified by peptide affinity chromatography using SulfoLink™ Coupling Resin (Thermo Fisher Scientific).

Immunogen:

A synthesized peptide derived from human TAS1R1, corresponding to a region within the internal amino acids.

Uniprot:

Q7RTX1



Western blot analysis of extracts from Rat brain, using TAS1R1 Ab at 1/1000 dilution.

Observed bands:80kD.

IMPORTANT: For western blot, incubate membrane with diluted primary Ab in 5% w/v milk , 1X TBS, 0.1% Tween@20 at 4°C with gentle shaking, overnight.

For Research Use Only. Not for use in diagnostic and therapeutic procedures. Not for resale without express authorization.