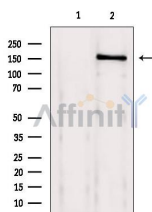


## Brd4 Ab

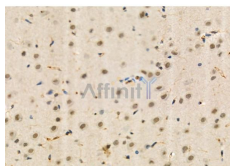
[References\(7\)](#) [Images\(9\)](#)

|               |                 |                       |
|---------------|-----------------|-----------------------|
| Cat.#: DF2905 | Concn.: ~1mg/ml | Mol.Wt.: 200kDa       |
| Size:         | Source: Rabbit  | Clonality: Polyclonal |

|               |   |
|---------------|---|
| Application:  | WB 1:1000-3000, IHC 1:50-1:200, IF/ICC<br>*The optimal dilutions should be determined by the end user.  |
| Reactivity:   | Human, Mouse, Rat   |
| Storage:      | Rabbit IgG in phosphate buffered saline, pH 7.4, 150mM NaCl, 0.02% sodium azide and 50% glycerol. Store at -20 °C. Stable for 12 months from date of receipt. |
| Purification: | The antiserum was purified by peptide affinity chromatography using SulfoLink™ Coupling Resin (Thermo Fisher Scientific).                                     |
| Immunogen:    | A synthesized peptide derived from human Brd4, corresponding to a region within N-terminal amino acids.   |
| Uniprot:      | O60885  |



Western blot analysis of extracts from 293, using Brd4 Ab. Lane 1 was treated with the blocking peptide.



DF2905 at 1/100 staining Rat brain tissue by IHC-P. The sample was formaldehyde fixed and a heat mediated antigen retrieval step in citrate buffer was performed. The sample was then blocked and incubated with the primary Ab at 4°C overnight. An HRP conjugated anti-Rabbit Ab was used as the secondary Ab.

**IMPORTANT:** For western blot, incubate membrane with diluted primary Ab in 5% w/v milk, 1X TBS, 0.1% Tween@20 at 4°C with gentle shaking, overnight.

For Research Use Only. Not for use in diagnostic and therapeutic procedures. Not for resale without express authorization.