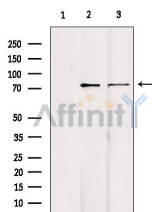


KIFC1 Ab

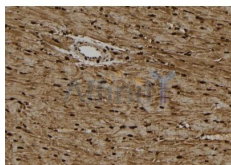
[Images\(3\)](#)

| | | |
|---------------|-----------------|-----------------------|
| Cat.#: DF2934 | Concn.: ~1mg/ml | Mol.Wt.: 74kDa |
| Size: | Source: Rabbit | Clonality: Polyclonal |

| | |
|---------------|---|
| Application: | WB 1:1000-3000, IHC 1:50-1:200, IF/ICC *The optimal dilutions should be determined by the end user. |
| Reactivity: | Human, Mouse, Rat |
| Storage: | Rabbit IgG in phosphate buffered saline, pH 7.4, 150mM NaCl, 0.02% sodium azide and 50% glycerol. Store at -20 °C. Stable for 12 months from date of receipt. |
| Purification: | The antiserum was purified by peptide affinity chromatography using SulfoLink™ Coupling Resin (Thermo Fisher Scientific). |
| Immunogen: | A synthesized peptide derived from human KIFC1, corresponding to a region within the internal amino acids. |
| Uniprot: | Q9BW19 |



Western blot analysis of extracts from various samples, using KIFC1 Ab.
Lane 1: mouse brain treated with blocking peptide.
Lane 2: mouse brain;
Lane 3: hepg2;



DF2934 at 1/100 staining Rat heart tissue by IHC-P. The sample was formaldehyde fixed and a heat mediated antigen retrieval step in citrate buffer was performed. The sample was then blocked and incubated with the Ab for 1.5 hours at 22°C. An HRP conjugated goat anti-rabbit Ab was used as the secondary Ab.

IMPORTANT: For western blot, incubate membrane with diluted primary Ab in 5% w/v milk, 1X TBS, 0.1% Tween@20 at 4°C with gentle shaking, overnight.

For Research Use Only. Not for use in diagnostic and therapeutic procedures. Not for resale without express authorization.