

## Phospho-RSK1 p90 (Thr359+Ser363) Ab

[Images\(2\)](#)

Cat.#: DF2949  
Size:

Concn.: ~1mg/ml  
Source: Rabbit

Mol.Wt.: 90kDa  
Clonality: Polyclonal

Application:

WB 1:1000-3000, IHC 1:50-1:200, IF/ICC

\*The optimal dilutions should be determined by the end user.

Reactivity:

Human, Mouse, Rat

Storage:

Rabbit IgG in phosphate buffered saline, pH 7.4, 150mM NaCl, 0.02% sodium azide and 50% glycerol. Store at -20 °C. Stable for 12 months from date of receipt.

Purification:

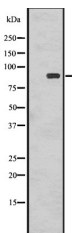
The Ab is from purified rabbit serum by affinity purification via sequential chromatography on phospho-peptide and non-phospho-peptide affinity columns.

Immunogen:

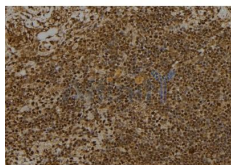
A synthesized peptide derived from human RSK1 p90 around the phosphorylation site of T359+S363.

Uniprot:

Q15418



Western blot analysis of Phospho-RSK1 p90 (T359+S363) using COLO205 whole cell lysates



DF2949 at 1/100 staining Human spleen tissue by IHC-P. The sample was formaldehyde fixed and a heat mediated antigen retrieval step in citrate buffer was performed. The sample was then blocked and incubated with the Ab for 1.5 hours at 22°C. An HRP conjugated goat anti-rabbit Ab was used as the secondary Ab.

**IMPORTANT:** For western blot, incubate membrane with diluted primary Ab in 5% w/v milk, 1X TBS, 0.1% Tween@20 at 4°C with gentle shaking, overnight.

For Research Use Only. Not for use in diagnostic and therapeutic procedures. Not for resale without express authorization.